

CANADIAN SOLAR

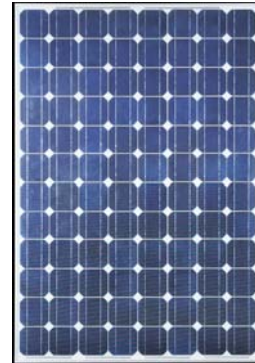
Silicon, Modules and Beyond



CS5P-210/220/230

Features:

- 5" mono crystalline silicon cells
- 96 high efficiency cell constructions
- Lightweight aluminum frame with a variety of easy mounting systems
- High transparent tempered glass with enhanced stiffness and impact resistance
- Advanced EVA encapsulation system with multilayer backsheets



Applications:

- on/off grid power stations
- Telecommunication
- Remote power requirements home systems (remote rural area)
- Stand alone or grid connected applications

Mechanical specifications

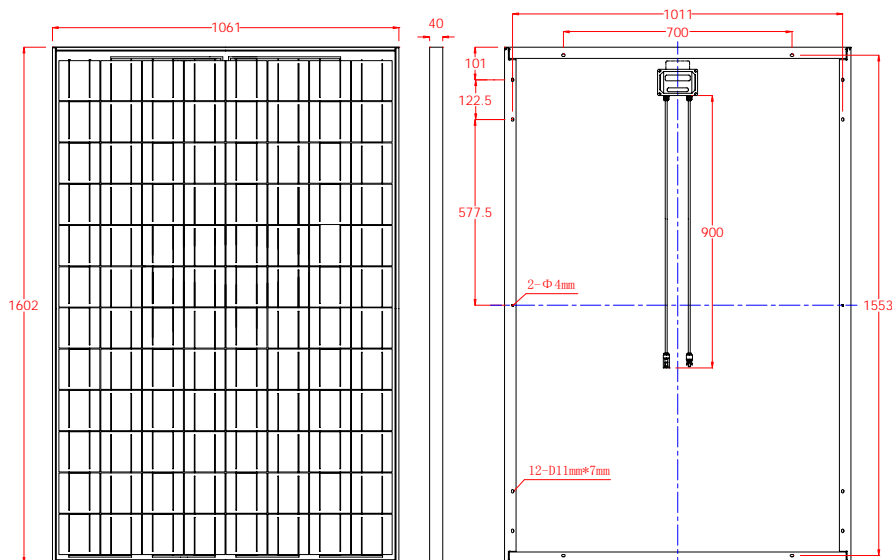
Length(mm)*Width(mm)	1602*1061
Thickness(mm)	40
Weight(kg)	20

ELECTRICAL CHARACTERISTICS AT STANDARD TEST CONDITIONS(STC)

STC is defined as: irradiance of 1000W/m², spectrum AM 1.5 and cell temperature of 25°C

		CS5P-210	CS5P-220	CS5P-230
Maximum power	W	210	220	230
Voltage at maximum power	V	45.98	46.37	46.75
Current at maximum power	A	4.57	4.74	4.92
Open circuit voltage	V	57.6	57.89	58.08
Short circuit current	A	4.97	5.18	5.4
Voltage coefficient	mV/°C	-208±20		
Current coefficient	%/°C	0.065±0.015		

DIMENSIONS



Limited warranty for 90% performance assurance on 10 years, 80% performance assurance on 25 years.

Module power tolerance: +/-5W.